



(Amended)

Government of India

Form GST REG-06

[See Rule 10(1)]

Registration Certificate

Registration Number :19ACYPG4165C1ZC

1.	Legal Name	PURUSOTAM DAS GUPTA			
2.	Trade Name, if any	TARACHAND RAMAUTAR			
3.	Additional trade names, if any				
4.	Constitution of Business	Proprietorship			
5.	Address of Principal Place of Business	4TH FLOOR, FL 403, Clive Square, 34 INDRA KUMAR KARNANI STREET, Kolkata, Kolkata, West Bengal, 700001			
6.	Date of Liability	01/07/2017			
7.	Date of Validity	From	01/07/2017	To	Not Applicable
8.	Type of Registration	Regular			
9.	Particulars of Approving Authority	Centre Goods and Services Tax Act, 2017			
Signature					
Name		TANMOY BASAK			
Designation		Superintendent			
Jurisdictional Office		KADAMTALA			
9. Date of issue of Certificate		13/09/2022			
Note: The registration certificate is required to be prominently displayed at all places of Business/Office(s) in the State.					



ABOUT US

M/S TARACHAND RAMAUTAR laid its

foundation on 1st July 2005 as a Proprietorship firm under the ownership of **Mr. Purushottam Das Gupta**. Under the strong leadership of **Mr. Tushar Gupta**, TARACHAND RAMAUTAR has built a reputation of providing timely delivery,

quality products, correct rates and genuine customer satisfaction. With the help of **Mrs. Snehal Gupta**, the firm has learned to adapt, improve and evolve new initiatives while redefining the marketing requirements. Since then, the company has been dealing in wholesale and retail supply of structural items including all types of ISI Specification pipes, structural steel, construction equipment & and general orders to various factories. The company supplies pipes to various sectors like Telecom, Fire Fighting, HVAC Contractors, Consultancy, Builders, Exporters, Construction Equipments and others.



CERTIFICATE OF DISTRIBUTORSHIP

CERTIFICATE OF APPRECIATION



MS/ERW PIPE

MS Pipe and MS Tube refers to Mild Steel Pipe or a Mild Steel Tubes. Mild Steel (MS) pipes are manufactured using low carbon (less than 0.25%) steel. Due to low carbon content the pipes do not harden and are easy to use. As MS Pipes are made from mild steel they can easily be welded and formed in various shapes and sizes for pipelining and tubing purposes. These are generally used for drinking water supply i.e. Plumbing, Firefighting, HVAC but can also be used in various other Industrial and Engineering applications. These pipes are usually coated with other metals/ paints/ varnish etc to prevent it from rusting but extra care should be taken to prevent it under extreme conditions.

APPLICATIONS AND USES

They are used in Plumbing, Firefighting, HVAC, Industrial and Engineering Sectors. Some applications are mentioned below.

BRIDGES

FIRE HYDRANT SYSTEM

SWAGED POLES



TELECOM TOWERS SCAFFOLDINGS INDUSTRIAL SHED

GI PIPE

Galvanised Iron (GI) Pipes are manufactured using mild steel strips of Low Carbon Steel Coils. The strips are passed through a series of fin rolls to give them a circular shape. The slit ends of the strips are then welded together by continuously passing high frequency electric current across the edges. The welded steel pipes are then passed through sizing sections where any dimensional deviations are corrected. The pipes are then cut into desired lengths by automatic cutting machines. The tubes are then pressure tested for any leaks randomly. The galvanization and varnishing of pipes are done as per specific requirements.

APPLICATIONS AND USES

The GI Pipes are generally used for distribution of treated or raw water in rural or urban areas. These pipes are cheaper, light weight and easy to handle.

- Water and Sewage Pipes
- Electric Poles
- Structural Purposes
- Engineering Purposes
- Automotive Purposes
- Oil and Gas Transmissions

Some of the applications of these pipes are mentioned below.



STRUCTURAL EQUIPMENTS

WATER AND SEWAGE SYSTEM

RHS AND SHS PIPE

A Hollow Structural Section, or HSS, is a type of metal with a hollow tubular section. These sections can be circular (CHS), square (SHS) or rectangular (RHS). Hollow Structural Sections, especially RHS steel is commonly used in welded steel frames while SHS and CHS are more often used in columns. Hollow Steel Sections are also commonly used as beams. These are manufactured through the process where flat steel plate is slowly changed in shape to achieve round where the edges are presented to weld. Then, the edges are welded together to form the master tube.

This master tube, which is also referred as mother tube goes through a sequence of shaping stands, which form the final square or rectangular shape.

APPLICATIONS AND USES

The applications of RHS and SHS Pipes are quite similar to MS Pipe. Some different applications are mentioned below.

RAILWAY COACHES

HOARDINGS

ROAD DIVIDERS



CRANESBUS BODY STRUCTUREAIRPORTS

VALVES

There are a large variety of valves and valve configurations to suit all services and conditions; different uses (on/off, control), different fluids (liquid, gas etc; combustible, toxic, corrosive etc) different materials and different pressure and temperature conditions. Valves are for starting or stopping flow, regulating or throttling flow, preventing back flow or relieving and regulating pressure in fluid or gaseous handling applications.

We deal in the following brands :

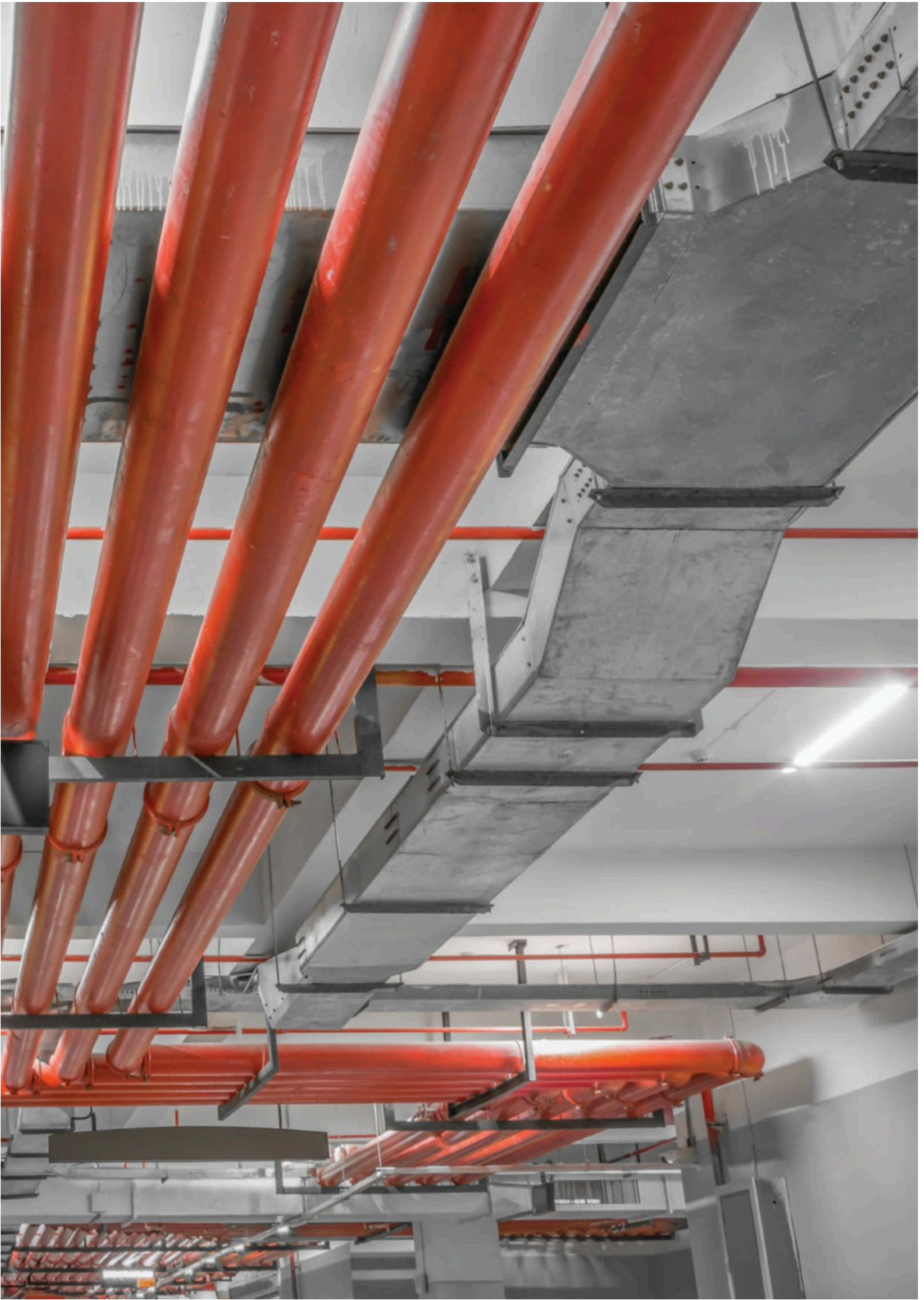
Common valve types include:

Sluice Valves, Resilient Seated Gate Valve, Butterfly Valve, Swing Check Valves (Non-Return Valves), Ball Valves, Foot Valves, Strainers, Air Valves, Bronze Plumbing Valves, Etc.

SLUICE VALVES

BUTTERFLY VALVE

NON RETURN VALVE



BALL VALVE FOOT VALVE AIR VALVE

MS SOCKET

MS TEE

MS UNION

MS FLANGEMS ELBOWMS REDUCER

UNIVERSAL CLAMP

NUT, BOLT & WASHER

U BOLT



BULLET FASTNERELBOW FORGEDTIE ROD (THREADED)

MS & GI PIPE FITTINGS

Pipe fittings allow pipes to be joined or installed in the appropriate place and terminated or closed wherever necessary. They are an essential part of piping systems. There are thousands of specialized fittings manufactured. Each type of pipe or tube requires its own type of fitting, but usually all pipe fittings share some common features. Pipe fittings are used in piping systems normally (i) to connect straight pipe or tubing sections, (ii) to adapt to different sizes or shapes, (iii) to branch or re-direct the piping system, (iv) if necessary to provide a jointing method if two dissimilar piping materials are used in the one system, and (v) for other purposes, such as regulating, measuring or changing the direction of the fluid flow or to connect up threaded pipe and equipment. They are also used to close or seal a pipe.

There are different types of pipe fitting used in piping. Some of them are mentioned below.

- 1.



1. MS Elbow
2. MS Socket
3. MS Nipple

4. MS Reducer
5. GI Elbow
6. Nut, Bolt & Washer
7. Pendent Tee
8. Universal Clamp
9. U Bolt
10. Telfon Tape
11. Jublee Clamp
12. MS Flange
13. Tie Rod
14. Elbow Forged
15. Socket Forged
16. Tail Piece
17. Bullet Fastner
18. GI Nut & Washer
19. End Cap
20. GI U Bolt

GST NO. 19ACYPG4165C1ZC

Distributor of MS & GI ERW Pipe & Pipe Fittings

PURUSHOTTAM GUPTA

9830081937

SUBHAM BHARTIA

7709122209

TUSHAR GUPTA

9674687002

SNEHAL GUPTA

9123088180

REGISTERED OFFICE

Clive Square, Suite #403, 34 Indra Kumar Karnani Street, 4th Floor, Kolkata - 700001

GODOWN 1

122/91 J.N. Mukherjee Road, Howrah - 711107

GODOWN 2

122/30/31 J.N. Mukherjee Road, Howrah - 711107

GODOWN 3

122/6 J.N. Mukherjee Road Howrah - 711107



AUTHORISED DISTRIBUTOR OF :

DEALS IN :